

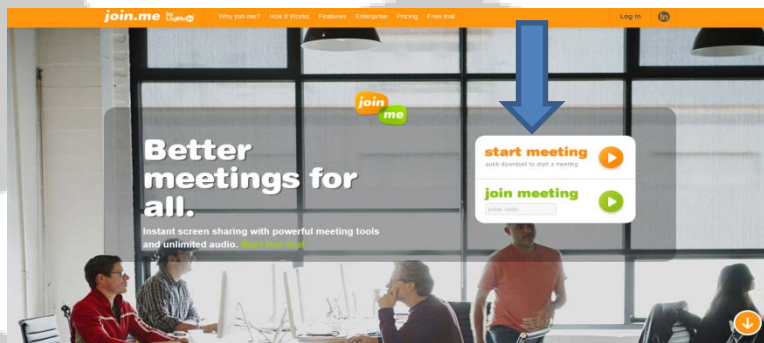
# Join.Me

Join.me is a website that MVNU's IT department uses when trying to remote into another personal computer (Not MVNU owned). It allows permission, given by the user, to our techs to remote into their personal computer and helps diagnose or fix an issue. By allowing a MVNU tech access to your computer we can better understand what is going on, get more information to figure out a solution, and potentially fix the issue all together. The MVNU tech will only have permission to take control of the mouse if the user allows them to. Join.me is a free program that is safe for all to use. For more instructions on how to get Join.me on your computer please contact us at [Motherboard@mvnu.edu](mailto:Motherboard@mvnu.edu)

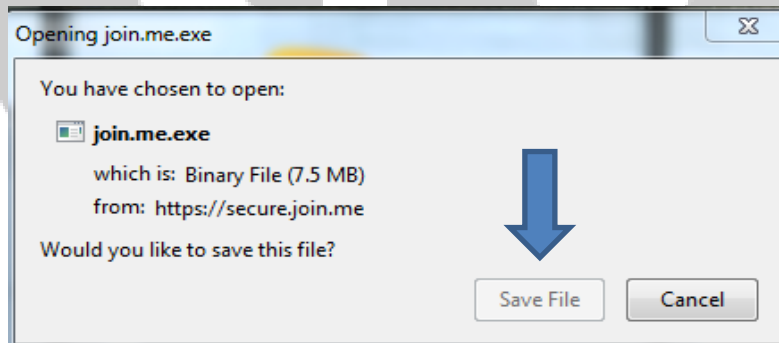
## How to Install Join.Me

Step 1: Go to Join.me (there is no www.)

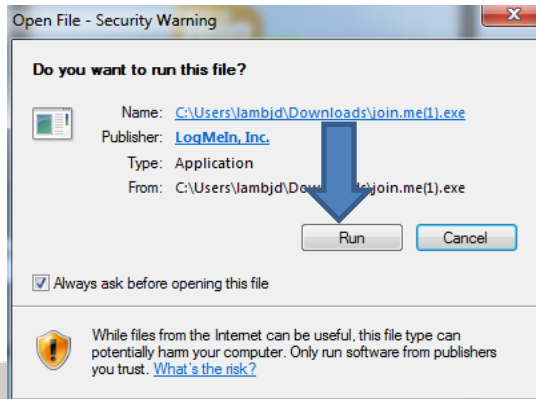
Step 2: Click "Start Meeting"



Step 3: Click on "Save File"



Step 4: Click on "Run"



Step 5: When It Is Done Installing It Will Come Up With A Number That The Tech On The Other End Will Need. Feel Free To Give Them This To Allow Them Access To Your PC.

